

## Bath Finishes

The exterior of a Drummonds bath is finished to a level that sets it apart from our competitors and will ensure your bath makes a statement in your home.

### Raw



With only a basic rust inhibiting finish applied, the natural rough exterior of the cast iron shows through.

### Primed



The exterior is ground down by hand, then filled and primed to give a smooth finish ready for painting.

### Painted



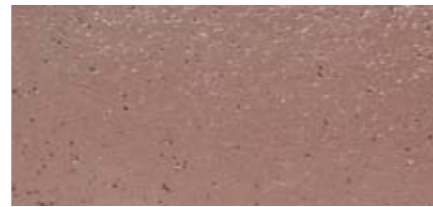
Choose from our range of paint colours selected by Sophie Conran.

### Copper Clad\*



Copper is hand-pressed onto the bath and polished and lacquered to a sheen.  
*\*Only available on the Usk*

### Polished & Lacquered



A thin layer of the cast iron exterior of the bath is ground off and then polished by hand to a beautiful shine. This is then lacquered to seal the metal.

*Please note the Polished & Lacquered option is a natural cast iron finish. There will be a variable amount of pitting on the exterior of the bath. This variable effect makes each bath uniquely beautiful. If you would prefer completely smooth silver exterior finish please specify a painted exterior.*

## Bath Colours

Sophie Conran's fabulous shade card brings new excitement to the bathroom, with twelve unique gloss colours inspired by flowers, water and personal memories, which illuminate her work. It is an irresistible addition to our beautiful cast iron baths.

### Pistachio Ice Cream



Paint Reference  
70GY 73074

Pantone Reference  
Pantone 621

### Periwinkle



Paint Reference  
10BB 43 / 206

Pantone Reference  
Pantone 7454

### Strawberry Fool



Paint Reference  
86RB 47 / 274

Pantone Reference  
Pantone 251

### Lipstick Red



Paint Reference  
84RR 13 / 471

Pantone Reference  
Pantone 206

### Zephyr



Paint Reference  
ZK1 Lavender Met.2C

Pantone Reference  
Pantone 8100

### Hyacinth



Paint Reference  
70RB 18 / 117

Pantone Reference  
Pantone 667

### Kingfisher Blue



Paint Reference  
50BB 18 / 276

Pantone Reference  
Pantone 647

### Kelp



Paint Reference  
90BG 10 / 067

Pantone Reference  
Pantone 432

### Sage



Paint Reference  
90GY 29 / 121

Pantone Reference  
Pantone 444

### Mrs Peacock



Paint Reference  
10RB 08 / 125

Pantone Reference  
Pantone 5255

## Metal Finishes

---

Although all of our fittings are manufactured in brass we offer three exterior finishes for you to choose from. We suggest a cleaner such as Brasso to bring out the best finish when needed, but please see our Pricing and Information brochure for more details.

### Brass

---



The brass is polished in our factory but not lacquered. Brass will tarnish naturally and require regular cleaning.

### Nickel-plated

---



The brass is polished and then plated in shiny nickel. Nickel is less hard-wearing than chrome and will tarnish over time.

### Chrome-plated

---



The brass is polished by hand and then plated in shiny chrome. The most hard-wearing finish in the bathroom.

## Wood Finishes

---

The following images give a close-up of the colours and grains used in our toilet seats.

*Please note that wood is a natural material and will vary in consistency and colour.*

### Black Oak

---



This is a gloss finish to the oak, very hard-wearing.

### Dark Oak

---



This stunning finish shows off the grain in the wood.

### Light Walnut

---



A burnished light walnut seat with a high-gloss finish.

### Dark Walnut

---



A burnished dark walnut seat with a high-gloss finish.