

**Important**

- Please inspect this product immediately on delivery to ensure that it has not been damaged in transit and is complete. Any claim for damage or shortage will not be entertained unless received within 3 days.
- To ensure this product is installed properly, you must read and follow these guidelines.
- Please read the whole of these instructions before starting installation.
- Be sure your installation conforms to local regulations.
- We recommend that this product is installed by a qualified professional contractor.
- Please refer to the specification and assembly drawings attached.
- Before installation, please inspect this product to ensure that it is the correct model and you have all the parts required for proper installation.
- Take all the necessary precautions to ensure that all parts are properly protected during installation. Polished and plated surfaces are particularly prone to damage from dirty and incorrect tools; spanners should be suitably lined so as not to damage plated or polished nuts.

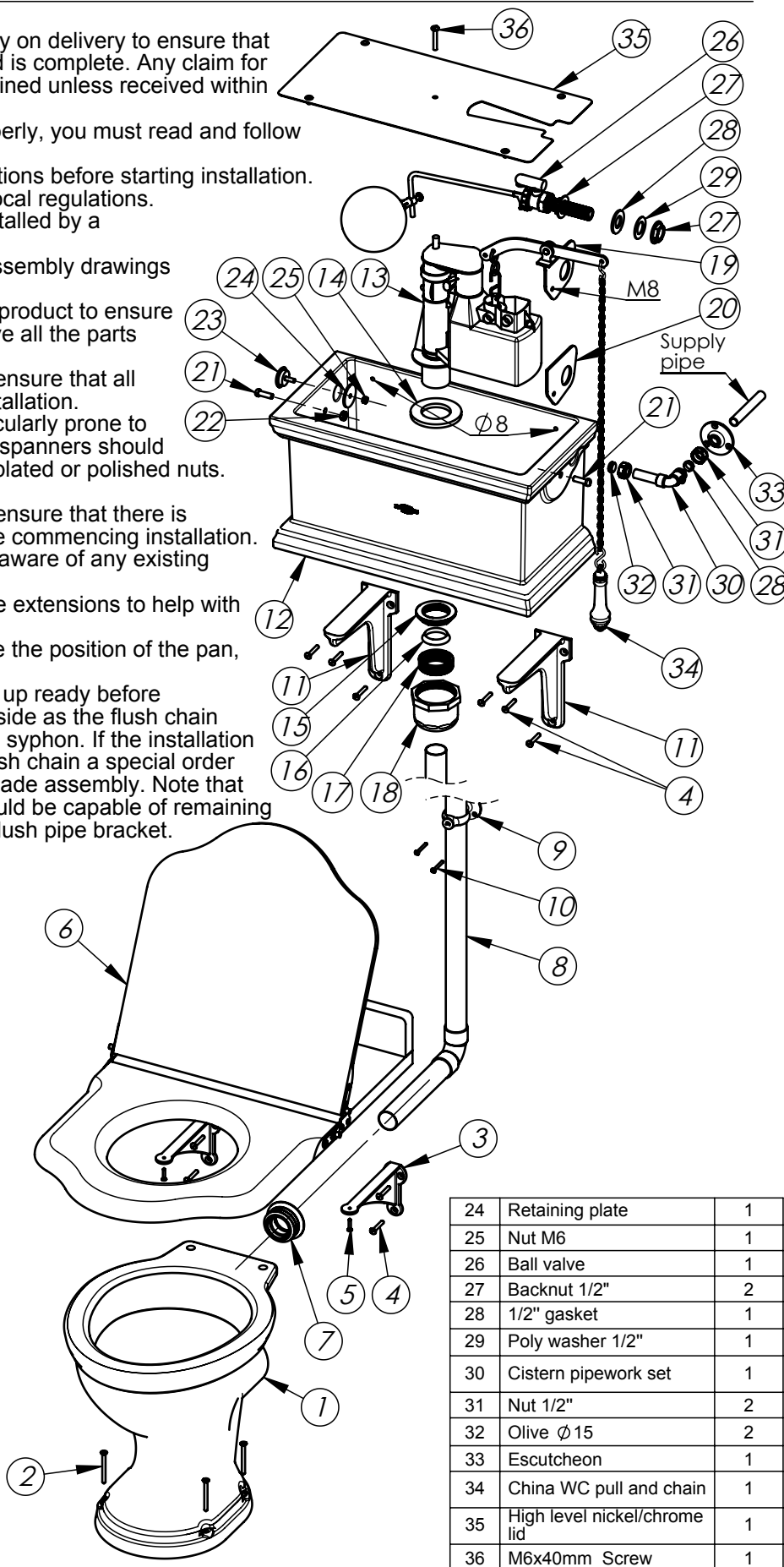
Flush the existing system with water to ensure that there is no debris in the existing pipework before commencing installation. When drilling holes in walls or floors be aware of any existing pipes or cables.

Drummonds can supply various soil pipe extensions to help with the variations in your installation.

Before starting the installation determine the position of the pan, seat and cistern position.

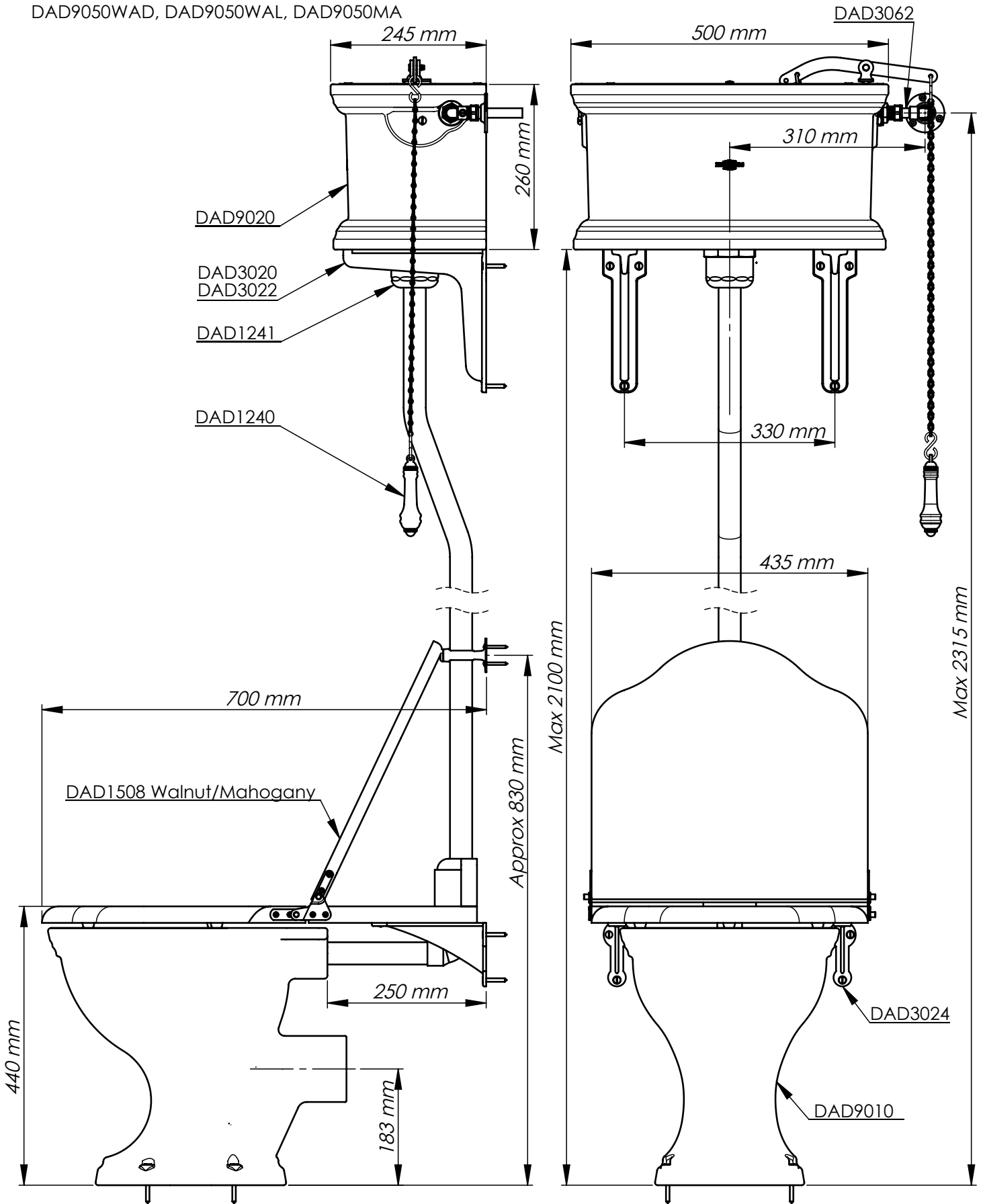
The 15mm supply pipe should be made up ready before installation which must be on the same side as the flush chain otherwise the ball valve will foul with the syphon. If the installation requires that the feed is opposite the flush chain a special order would have to be placed for a custom made assembly. Note that once installed the toilet seat and lid should be capable of remaining in the upright position resting upon the flush pipe bracket.

ITEM NO.	NAME	NO OF.
1	The Dunnett WC Pan	1
2	12x2.1/2" screws	4
3	Cistern Brackets-slim	1pr
4	12x1.1/2" screws	12
5	8x1" screws	2
6	Throne seat	1
7	Flush Pipe Cone	1
8	High level flush pipe	1 (2 part)
9	Flush pipe Wall clip	1
10	8x1.1/2" screws	2
11	Cistern brackets	1pr
12	High Level Cistern	1
13	7" Syphon	1
14	Washer	1
15	Compression nut	1
16	Olive	1
17	Compression nut	1
18	High level flush pipe nut cover	1
19	Lever arm	1
20	Gasket	1
21	25mm bolt M8	2
22	Nut M8	1
23	Cover plug	1



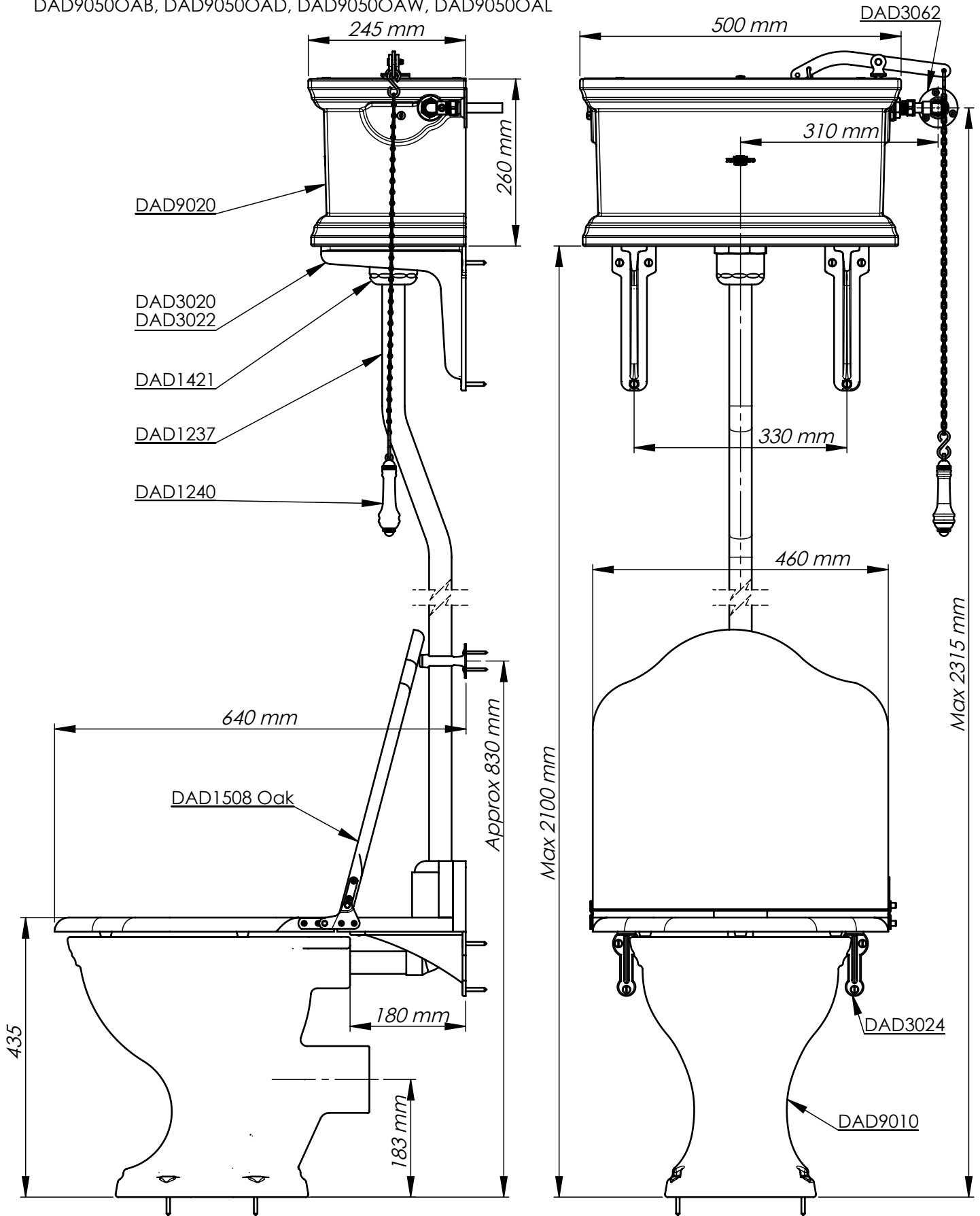
24	Retaining plate	1
25	Nut M6	1
26	Ball valve	1
27	Backnut 1/2"	2
28	1/2" gasket	1
29	Poly washer 1/2"	1
30	Cistern pipework set	1
31	Nut 1/2"	2
32	Olive Ø15	2
33	Escutcheon	1
34	China WC pull and chain	1
35	High level nickel/chrome lid	1
36	M6x40mm Screw	1

DAD9050WAD, DAD9050WAL, DAD9050MA



All our goods are handmade and may vary slightly from drawings. If you are unsure of how to assemble the goods, please call us and we will try help over the phone. We would also ask that you try and recycle all packing where possible and leave the item well protected for the customer. Thank you.

DAD9050OAB, DAD9050OAD, DAD9050OAW, DAD9050OAL



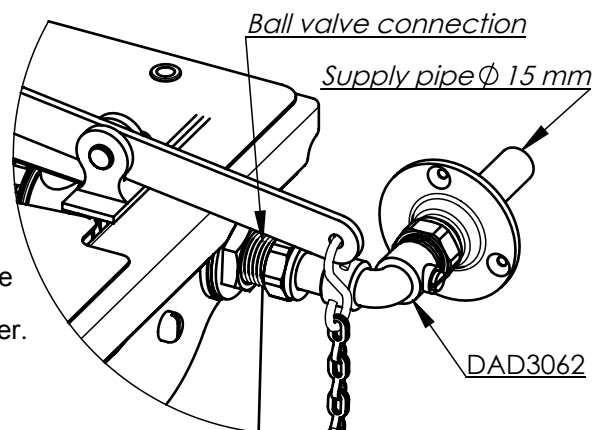
All our goods are handmade and may vary slightly from drawings. If you are unsure of how to assemble the goods, please call us and we will help over the phone. We would also ask that you try and recycle all packing where possible and leave the item well protected for the customer. Thank you.

1. The Throne seat determines the position of the pan and the seat support rubbers must be fitted first in order to set the height for the support brackets (3). Four seat rubbers are provided to go under the seat. The depth of the throne seat can be reduced by removing the upstand at the rear which is pegged in place, reducing the depth by careful cutting, recutting the opening for the flush tube and finally repegging the upstand in place.
2. Place the Throne seat upon the pan and determine the correct position for the pan and screw to the pan to the floor using the screws provided - do not over tighten as this could cause damage to the pan - then connect up the outlet.
3. The Throne seat support rubbers need to be fitted next. Place the Throne seat upon the pan in the correct position and tight up against the wall. From under the seat draw around the pan leaving a line on the under side of the seat, do this from the internal side of the pan also. Remove the seat and screw the four support rubbers in the correct place between the pencil lines. Replace the seat upon the pan and against the wall using this position to enable the brackets (3) to be fixed to the wall. Attach the seat to the brackets (3) and ensure that the seat operates freely and will remain in the upright position resting upon the flush pipe bracket once fitted. The seat can now be removed in order to fit the cistern and flush tube to save it from any damage but bear in mind that the flush tube will have to fit in the opening at the rear of the seat.
4. Next dry fit the flushpipe (8) to the pan, ensuring that it is vertical and fix the flushpipe clip (9) to the wall using the screws provided making sure that the seat will lean on the rubber stop on the clip (this wall clip will need to be removed and reinstalled later to complete assembly). Note: the flush pipe may be shortened by trimming the end.
5. Fix the cistern support brackets (11) to the wall - be aware of any existing pipes or cables - ensuring that the flush pipe (8) is vertical when centered between them. The bottom of the cistern should be a maximum of 2110mm and a minimum of 1600mm from the floor and the brackets should be at 330mm centers.
6. Fit syphon (13) into the cistern (12) with washer (14) using a suitable sealant where necessary then from under the cistern fit compression nut (15) using only sufficient pressure to create a watertight seal. Attach lever arm (19) to syphon (13) and with gasket (20) and a suitable sealant where necessary attach to cistern (13) and secure with bolt (21) but do not overtighten. Ensure that the lever arm and syphon operate freely.
7. Install ball valve (26) on the same side as the lever arm is fitted ensuring that the backnuts (27) are tight with the washers (28 and 29) and correctly positioned using a suitable sealant where necessary, do not overtighten the backnuts. Ensure that the float is at the correct height and operates freely.
8. Insert the cover plug (23) in the opposite hole with retaining plate (24) and nut (25) to secure it using a suitable sealant but do not overtighten the nut. Insert the spare M8 bolt (21) using a suitable sealant into the spare lever retaining hole and secure with an M8 nut (22) but do not overtighten the nut.
9. Position the cistern onto the wall brackets and fix to the wall ensuring that it is central and level, be aware of any existing pipes or cables, do not over tighten the screws as this could cause damage to the cistern using rubber washers where necessary.
10. Remove the flushpipe (8) from the pan with wall clip (9) taking care not to scratch the flush pipe (hold temporarily in place with tape) and seal the lower section into the pan with the cone (7) using suitable sealant. Next wipe a small amount of sealant over the lower end of the top section and insert into the bottom section of the flush pipe, ensuring that it is pushed fully home.
11. Place the nut cover (18), compression nut (17) and the olive (16) onto the top of the flushpipe (8). Insert the flushpipe (8) into the base of the syphon (13). Note: the flush pipe may be cut to reduce the height if necessary. Tighten the compression nut (15) onto the syphon ensuring that the olive is correctly seated and take care not to disturb the position of the syphon. Leave the cover nut off for the moment in order to check for leaks. Re attach the wall clip (9).
12. The cistern pipework set (30), escutcheon (33) and associated nuts and olives (31 and 32) can be fitted to the ball valve and water supply next taking care with any plating on the escutcheon. Whilst tightening the 1/2" nuts take care not to place any undue strain on the installation.
13. Fill the cistern, ensuring that the ball valve shuts off at the appropriate level and that water is not flowing down the internal overflow. Hook the pull and chain (34) onto the outboard end of the lever. Test flush the cistern and check for leaks. Screw on the flushpipe nut cover (18) and refit the Throne seat.
14. Remove any excess sealant from the installation.

Notes: Drummond's products are handmade therefore dimensions may vary slightly. Please try to recycle all packaging where possible and leave the item well protected for the customer - thank you. The manufacturer's warranty does not cover any products which have been damaged as a result of misuse, faulty installation or maintenance.

#### Cleaning

Brass - use a mild non-abrasive cleaner such as brasso.  
 Chrome and nickel plated products - use a mild non-abrasive cleaner such as silvo.  
 Chinaware - use a proprietary non abrasive bathroom cleaner.



All our goods are handmade and may vary slightly from drawings. If you are unsure of how to assemble the goods, please call us and we will try help over the phone. We would also ask that you try and recycle all packing where possible and leave the item well protected for the customer. Thank you.