

**Important**

- Please inspect this product immediately on delivery to ensure that it has not been damaged in transit and is complete. Any claim for damage or shortage will not be entertained unless received within 3 days.
- To ensure this product is installed properly, you must read and follow these guidelines.
- Please read the whole of these instructions before starting installation.
- Be sure your installation conforms to local regulations.
- We recommend that this product is installed by a qualified professional contractor.
- Please refer to the specification and assembly drawings attached.
- Before installation, please inspect this product to ensure that it is the correct model and you have all the parts required for proper installation.
- Take all the necessary precautions to ensure that all parts are properly protected during installation. Polished and plated surfaces are particularly prone to damage from dirty and incorrect tools; spanners should be suitably lined so as not to damage plated or polished nuts.

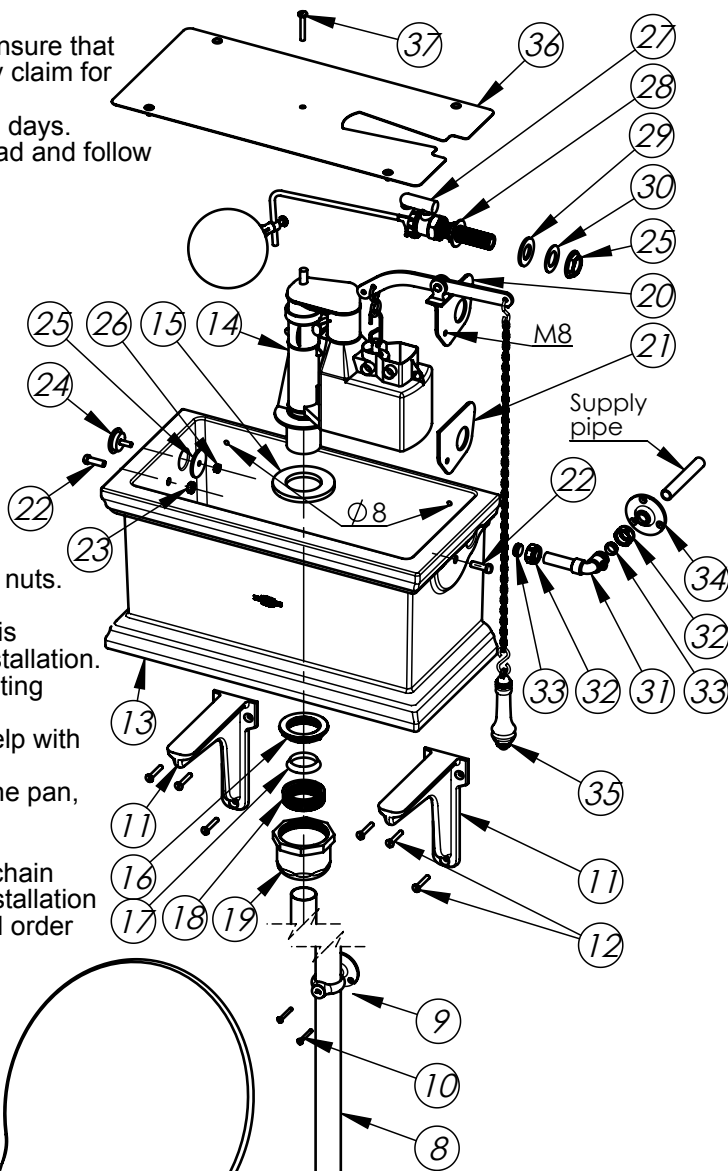
Flush the existing system with water to ensure that there is no debris in the existing pipework before commencing installation. When drilling holes in walls or floors be aware of any existing pipes or cables.

Drummonds can supply various soil pipe extensions to help with the variations in your installation.

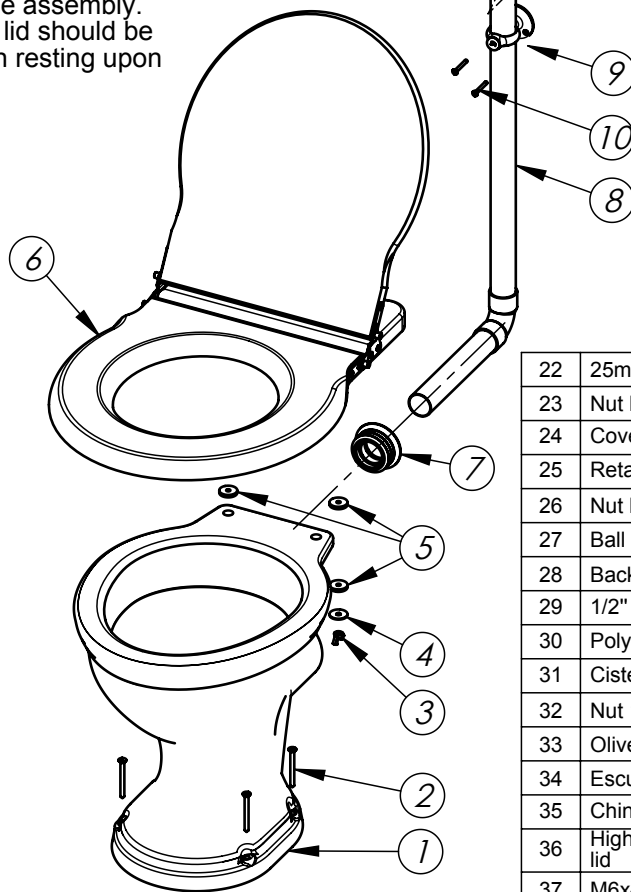
Before starting the installation determine the position of the pan, seat and cistern position.

The 15mm supply pipe should be made up ready before installation which must be on the same side as the flush chain otherwise the ball valve will foul with the syphon. If the installation requires that the feed is opposite the flush chain a special order would have to be placed for a custom made assembly.

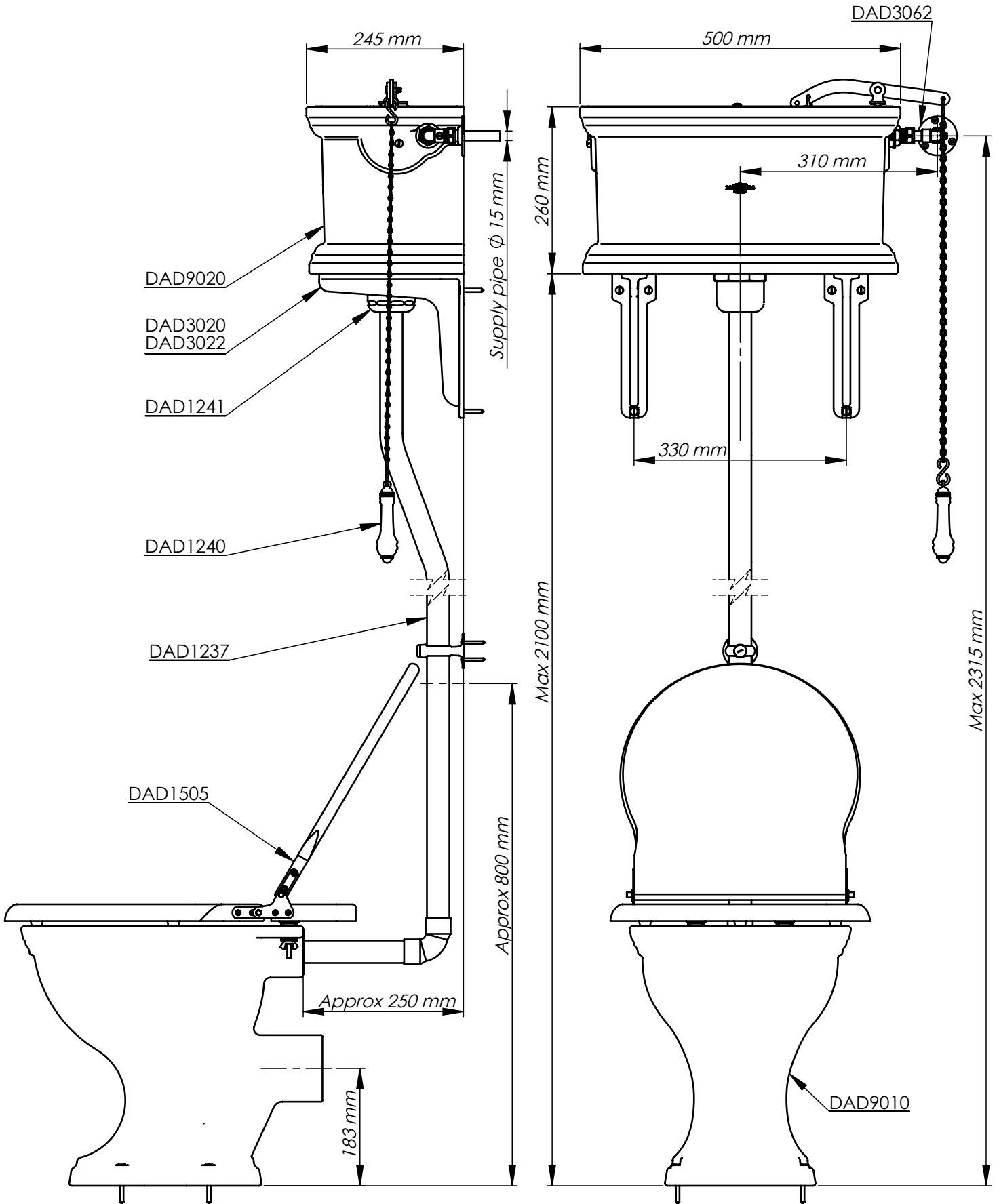
Note that once installed the toilet seat and lid should be capable of remaining in the upright position resting upon the flush pipe bracket.



| ITEM NO. | NAME                            | NO OF.     |
|----------|---------------------------------|------------|
| 1        | The Dunnett WC Pan              | 1          |
| 2        | 12x2.1/2" screws                | 4          |
| 3        | Nut M6                          | 2          |
| 4        | Washer Ø6                       | 2          |
| 5        | Rubber washer                   | 4          |
| 6        | Standard seat                   | 1          |
| 7        | Flush Pipe Cone                 | 1          |
| 8        | High level flush pipe           | 1 (2 part) |
| 9        | Flush pipe Wall clip            | 1          |
| 10       | 8x1.1/2" screws                 | 2          |
| 11       | Cistern brackets                | 1pr        |
| 12       | 12x1.1/2" screws                | 6          |
| 13       | High Level Cistern              | 1          |
| 14       | 7" Syphon                       | 1          |
| 15       | Washer                          | 1          |
| 16       | Compression nut                 | 1          |
| 17       | Olive                           | 1          |
| 18       | Compression nut                 | 1          |
| 19       | High level flush pipe nut cover | 1          |
| 20       | Lever arm                       | 1          |
| 21       | Gasket                          | 1          |



|    |                              |   |
|----|------------------------------|---|
| 22 | 25mm bolt M8                 | 2 |
| 23 | Nut M8                       | 1 |
| 24 | Cover plug                   | 1 |
| 25 | Retaining plate              | 1 |
| 26 | Nut M6                       | 1 |
| 27 | Ball valve                   | 1 |
| 28 | Backnut 1/2"                 | 2 |
| 29 | 1/2" gasket                  | 1 |
| 30 | Poly washer 1/2"             | 1 |
| 31 | Cistern pipework set         | 1 |
| 32 | Nut 1/2"                     | 2 |
| 33 | Olive Ø15                    | 2 |
| 34 | Escutcheon                   | 1 |
| 35 | China WC pull and chain      | 1 |
| 36 | High level nickel/chrome lid | 1 |
| 37 | M6x40mm screw                | 1 |



All our goods are handmade and may vary slightly from drawings. If you are unsure of how to assemble the goods, please call us and we will try to help over the phone. We would also ask that you try and recycle all packing where possible and leave the item well protected for the customer. Thank you.



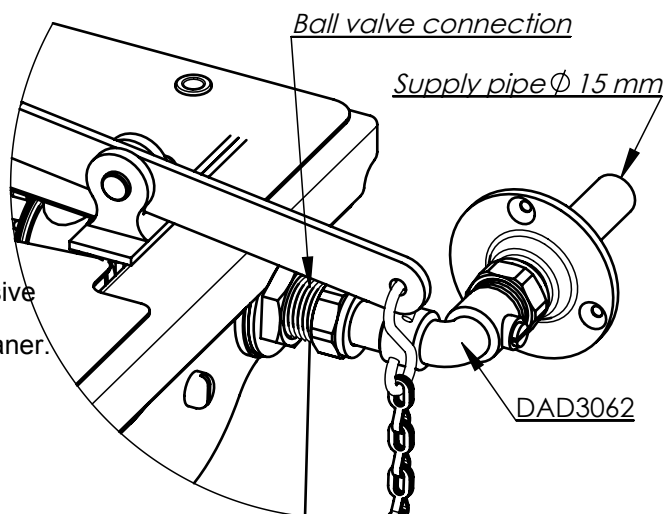
1. Fit the pan (1) so that the inlet spigot distance from the wall is approximately 220mm, screw to the floor using the screws provided - do not over tighten as this could cause damage to the pan - then connect up the outlet. Note once installed the toilet seat lid should be capable of remaining in the upright position against the flush pipe wall clip (9).
2. Next dry fit the flushpipe (8) to the pan, ensuring that it is vertical and fix the flush pipe clip (9) to the wall using the screws provided making sure that the seat will lean on the rubber stop on the clip (this wall clip will need to be removed and reinstalled later to complete assembly). Note: the flush pipe may be shortened by trimming the end.
3. Fix the cistern support brackets (11) to the wall - be aware of any existing pipes or cables - ensuring that the flushpipe (8) is vertical when centered between them. The bottom of the cistern should be a maximum of 210mm and a minimum of 1600mm from the floor and the brackets should be at 330mm centers.
4. Fit syphon (14) into the cistern (13) with washer (15) using a suitable sealant where necessary then from under the cistern fit compression nut (16) using only sufficient pressure to create a watertight seal. Attach lever arm (20) to syphon (14) and with gasket (21) and a suitable sealant where necessary attach to cistern (13) and secure with bolt (22) but do not overtighten. Ensure that the lever arm and syphon operate freely.
5. Install ball valve (27) on the same side as the lever arm is fitted ensuring that the backnuts (28) are tight with the washers (29 and 30) and correctly positioned using a suitable sealant where necessary, do not overtighten the backnuts. Ensure that the float is at the correct height and operates freely.
6. Insert the cover plug (24) in the opposite hole with retaining plate (25) and nut (26) to secure it using a suitable sealant but do not overtighten the nut. Insert the spare M8 bolt (22) using a suitable sealant into the spare lever retaining hole and secure with an M8 nut (23) but do not overtighten the nut.
7. Position the cistern onto the wall brackets and fix to the wall ensuring that it is central and level, be aware of any existing pipes or cables, do not over tighten the screws as this could cause damage to the cistern using rubber washers where necessary.
8. Remove the flushpipe (8) from the pan with wall clip (9) taking care not to scratch the flush pipe (hold temporarily in place with tape) and seal the lower section into the pan with the cone (7) using suitable sealant. Next wipe a small amount of sealant over the lower end of the top section and insert into the bottom section of the flush pipe, ensuring that it is pushed fully home.
9. Place the nut cover (19), compression nut (18) and the olive (17) onto the top of the flushpipe (8). Insert the flushpipe (8) into the base of the syphon (14). Note: the flush pipe may be cut to reduce the height if necessary. Tighten the compression nut (18) onto the syphon ensuring that the olive is correctly seated and take care not to disturb the position of the syphon. Leave the cover nut off for the moment in order to check for leaks. Re attach the wall clip (9).
10. The cistern pipework set (31), escutcheon (34) and associated nuts and olives (33 and 32) can be fitted to the ball valve and water supply next taking care with any plating on the escutcheon. Whilst tightening the 1/2" nuts take care not to place any undue strain on the installation.
11. The seat and lid will have to be attached to the pan in order to provide a template for the seat support rubber fixing position. Attach the toilet seat to the pan temporarily with the bolts, washer and nuts provided ensuring that it is in the correct position (see drawing) and that the seat and lid are able to remain in the upright position resting upon the flush pipe wall clip (9). From under the seat draw around the pan leaving a line on the under side of the seat, do this from the internal side of the pan also. Remove the seat and screw the four support rubbers in the correct place between the pencil lines. Refit the seat and lid and check that it operates freely and sits correctly on the pan.
12. Fill the cistern, ensuring that the ball valve shuts off at the appropriate level and that water is not flowing down the internal overflow. Hook the pull and chain (35) onto the outboard end of the lever. Test flush the cistern and check for leaks and screw on the flushpipe nut cover (19).
13. Remove any excess sealant from the installation.

Notes: Drummond's products are handmade therefore dimensions may vary slightly.

Please try to recycle all packaging where possible and leave the item well protected for the customer - thank you. The manufacturer's warranty does not cover any products which have been damaged as a result of misuse, faulty installation or maintenance.

### Cleaning

Brass - use a mild non-abrasive cleaner such as brasso.  
 Chrome and nickel plated products - use a mild non-abrasive cleaner such as silvo.  
 Chinaware - use a proprietary non abrasive bathroom cleaner.



All our goods are handmade and may vary slightly from drawings. If you are unsure of how to assemble the goods, please call us and we will try help over the phone. We would also ask that you try and recycle all packing where possible and leave the item well protected for the customer. Thank you.